

# Sun & PortWise

## Powerful Identity and Access Management



Secure and manage identities and access across multiple user types, while lowering costs and maximizing ease of use. PortWise and Sun makes identity and access management for the mobile and extranet enterprise a reality, through powerful integration of best of breed technologies.

### Highlights

- Manage PortWise users through the Sun Java Identity Manager.
- Ideal solution for securing access for employees, partners, and customers.
- Automatically add or delete users, lowering costs and easing manageability.
- Easy to use web-interface provides powerful management of all aspects of users identity.
- Protected and secure self administration dramatically reduces costs.
- LDAP properties can be easily used to control access rights for users.

## Managing Identities and Access

Today's business environment requires enterprises to protect access to sensitive data and applications, while maintaining agility and speed to respond to business changes. At the same time the need to manage who has access is becoming increasingly complex as enterprises open their systems to partners and customers. What is needed is an integrated system for managing identities and secure access across multiple profiles with minimum effort and costs.

## Ensuring Maximum Return on Investment and Ease of Use

PortWise and Sun have teamed up to offer best of breed technologies to meet those business requirements with a solution that is comprehensive, integrated, and secure.

PortWise offer's industry leading identity and access management technology for the mobile and extranet enterprise, in an easy to use package that seamlessly integrates with Sun's Java Identity Manager.

Sun is one of the world's leading software and hardware manufacturers, and has an extensive suite of software products to meet the growing requirements of managing identities across multiple environments.

Together, the PortWise IAM and Sun Java Identity Manager solution is a perfect match. By combining these two products, enterprises have unprecedented control over who has access and how, making management of multiple user types much easier.

As most enterprises today boasts a number of users, such as employees, partners, suppliers, and customers, clear and easy management of different user groups becomes essential. The Sun Java Identity Manager uses the core functions within Sun Java Identity Manager to provision the users to the Sun Java Directory Server. PortWise then automatically enrolls the users upon first logon. User groups and other user attributes can also be managed directly from Sun Java Identity Manager. Successful interoperability tests have verified that users provisioned by the Sun Java Identity Manager can automatically be used within PortWise.

## User Provisioning

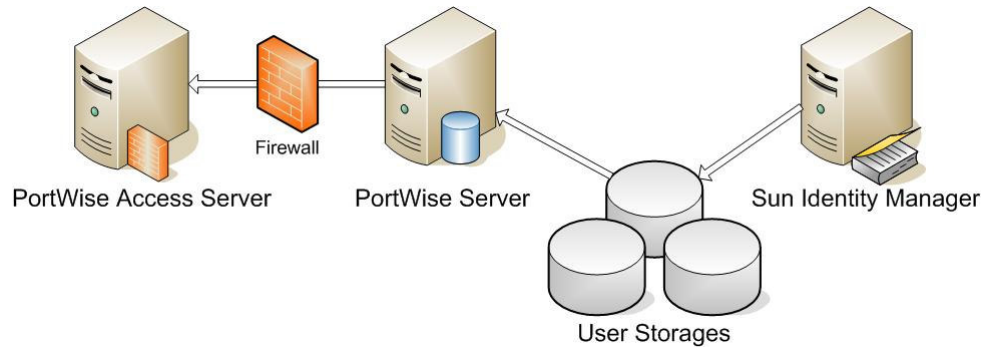
Sun Java Identity Manager has the capability to manage users on multiple platforms and systems. Users are created, modified and removed easily within the system. PortWise users are now fully supported as a sub-group and can be managed from the Sun Java Identity Manager. Users provisioned to the Sun Java Directory Server are seamlessly used by PortWise. Attributes supported, include:

- UserID
- Real name
- Password
- E-mail address
- Mobile number or pager number
- Group information

PortWise automatically uses the new values when it is updated. If the user is removed by the Sun Java Identity Manager, PortWise automatically disables the user. This makes managing access easy and effortless, with no overhead involved in granting or denying access to critical applications and data. For security reasons, this is critical, as research has shown that most threats come from internal users with powerful access.

## User Self Administration

PortWise and Sun Java Identity Manager can also benefit user self service administration functions, cutting costs dramatically by removing the need for administrator intervention in every transaction. PortWise can enable access to user self administration pages, following the company's security policy. If a user logs in from a company owned and trusted computer, the administration functions can be automatically enabled. Once verified, the PortWise End-Point-Security technology will then be used to ensure the device is clean from viruses, spyware, and other



Managing users and their access rights is easy with Sun and PortWise.

malware used by hackers to steal information and identities.

## Optimize Protection

Part of ensuring information integrity is ensuring that users who access the system have the right credentials. PortWise authentication technology can meet any requirement, including strong 1-factor authentication and state-of-the-art 2-factor authentication with one-time passwords. As digital identities become more and more valuable, safeguarding those identities becomes critical.

## Key Features and Added Values

- Single administration from Sun Java Identity Manager
- Seamless user provisioning to PortWise
- Additional user properties can be used for authorization
- Transparent usage of user groups
- Protected and secure self administration

## About PortWise Ltd.

PortWise provides completely secure access to critical information and applications for the mobile workforce and distributed partner networks, from any device in any location. Our Application-Oriented Access solution is the industry's first fully integrated single platform to enable the secure mobilization of the workforce while driving efficiencies and protecting the integrity of the organization. PortWise has offices in Europe, Asia, and America and can be found on the Web at <http://www.portwise.com>

## About Sun Microsystems, Inc.

A singular vision -- "The Network Is The Computer" -- guides Sun in the development of technologies that power the world's most important markets. Sun's philosophy of sharing innovation and building communities is at the forefront of the next wave of computing: the Participation Age. Sun can be found in more than 100 countries and on the Web at <http://sun.com>.